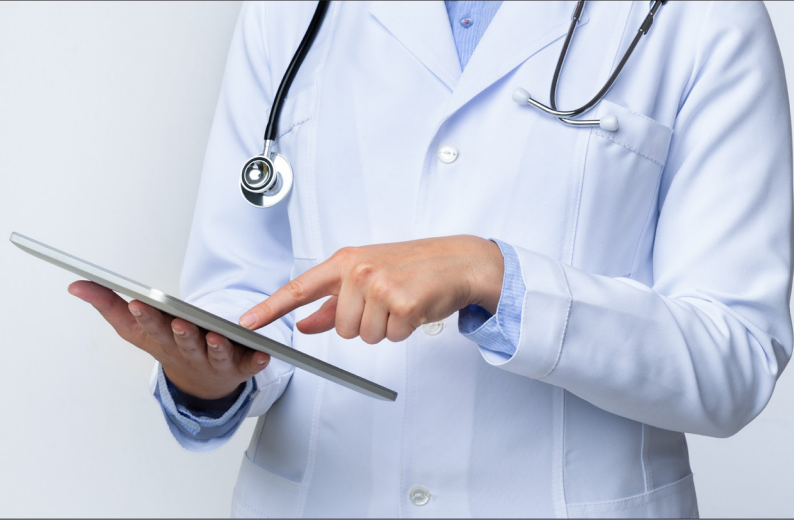


CMSI Criteria for Expedited Status



- ☐ Cancer diagnosis—chemo, urgent diagnostics
- ☐ Facility transfers
- ☐ Transplants
- ☐ Dialysis
- ☐ Durable Medical Equipment needed for discharge from hospital setting (e.g., Zoll Life Vest, Oxygen, Wheelchair, etc.).
- ☐ Inpatient admission through the ER—not a planned admission
- ☐ Inpatient admission planned for 7 days or less from time of call
- ☐ Any behavioral health admissions
- ☐ Infusions / Injections
- ☐ Hospice—home or inpatient

Any case requiring Physician review may take additional time.

CMSI will not impede care.

No guarantee of claim payment until case is reviewed.

Final determination of benefits is based on in-network or out-of-network status, eligibility, deductibles, plan limits, and overall plan language. Benefits must be verified with the plan administrator or health fund directly.